



# EOS C300 / EOS C300 PL DIGITAL CINEMA CAMERAS

## Leave No Story Untold

Canon has created the Cinema EOS System – a definitive HD motion picture system, conceived as an extension of the cinematographer. The new EOS C300 and EOS C300 PL cameras, Canon EF Cinema lenses, our comprehensive service and support network and educational resources are all designed to help you tell your story the way you imagined it.

The powerful EOS C300 and EOS C300 PL cameras are centered on Canon's unique Super 35mm CMOS sensor, revolutionary Canon **DiGiC DV III** Image Processor, and 50Mbps 4:2:2 codec writing out to dual CF cards. Compact and lightweight, modular in design, and compatible with Canon's new EF Cinema lenses, as well as third party accessories, the EOS C300 and EOS C300 PL are reliable in the studio and rugged on location – no matter how far your assignment or imagination takes you. A family of Canon EF and PL-mount lenses designed specifically for cinematography applications includes fast cine primes and wide-tele zooms with the optical performance, controls and usability you need. Designed with SMPTE HD production standards, these cameras' MPEG-2 codec conforms to an internationally recognized standard compatible with major NLE applications, and additional features such as Canon Log Gamma ensure seamless integration with existing production workflows. And with an entire infrastructure designed to support and educate, troubleshoot and repair, to listen and to innovate, you will get the most from your equipment before, during and after production. The EOS C300 and EOS C300 PL are ready to go to work.



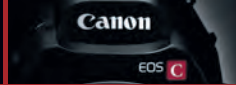
## Key Features

- ▶ New Canon Super 35mm CMOS Sensor
- ▶ Canon **DiGiC DV III** Image Processor
- ▶ Canon XF Codec
- ▶ Two Camera Models – EF or PL mount
- ▶ Canon Log Gamma
- ▶ Wide Dynamic Range Even in Low-Light
- ▶ Compact and Modular Design
- ▶ Wireless Remote Control with WFT-E6A
- ▶ Multiple Recording Formats Including True 24p & Advanced Recording
- ▶ Compatibility with Third-Party Accessories
- ▶ Dual CF Card Slots and Industry Standard Video Terminals
- ▶ Compatible with Major NLE Applications

## Recommended For:

- ▶ Cinematic Film Production
- ▶ Episodic TV Production
- ▶ Documentary Film Production
- ▶ Independent Film Production
- ▶ Advertising
- ▶ Commercial Video

# EOS C300 / EOS C300 PL



# EOS C300 / EOS C300 PL DIGITAL CINEMA CAMERAS

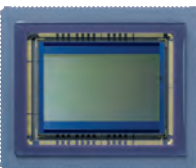
PRODUCT NAME: EOS C300 / EOS C300 PL ITEM CODE: 5779B002 (EOS C300), 5819B002 (EOS C300 PL)

## SPECIFICATIONS

SPECIFICATIONS		EOS C300	EOS C300 PL
STANDARD DEFINITION OR HIGH DEFINITION		High Definition	
RECORDING / CODEC	SIGNAL SYSTEM	NTSC and PAL	
	COMPRESSION	8 Bit MPEG-2 Long GOP	
	COLOR SPACE	4:2:2 at 50Mbps recording	
	MAXIMUM BIT RATE	50Mbps (CBR)	
	CANON LOG GAMMA	Available	
	FILE FORMAT	MXF (OP-1a)	
RECORDING OPTIONS		50Mbps (CBR) 4:2:2 422P@HL: 1920x1080: 59.94i / 29.97p / 23.98p; 50i / 25p; True 24 (24.00); 1280x720: 59.94p / 29.97p / 23.98p; 50p / 25p; True 24 (24.00); 35Mbps (VBR) 4:2:0 MP@HL: 1920x1080: 59.94i / 29.98p / 23.98p; 50i / 25p; 1280x720: 59.94p / 29.97p / 23.98p; 50p / 25p; 25Mbps (CBR) 4:2:0 MP@H14: 1440x1080: 59.94i / 29.97p / 23.98p; 50i / 25p	
		Linear PCM; 2-Channel; 16-Bit; 48kHz Built-in Microphone: None External Audio Inputs: 2 – XLR inputs (Auto and Manual level settings) Recording Channel Selection: Two channel recording XLR Mic Trimming: Available; -12dB, -6 dB, 0dB or +12dB; Recording Level Adjustment Range: - Infinity to +18dB Phantom Power: Available: +48V Headphone Adjustment: 16 Settings; Volume is muted at lowest setting 1KHz Tone: Available: -12, -16 or -20 dB	
IMAGE SENSOR / IMAGE PROCESSOR	SENSOR TYPE	CMOS sensor (single-panel), equivalent to Super 35mm	
	SENSOR SIZE	24.6 x 13.8mm effective screen size (6.4 x 6.4 micron pixel pitch)	
	SCANNING SYSTEM	Progressive	
	NO. OF SENSORS	1	
	IMAGING PROCESSOR	DIGIC DV III	
PIXELS	TOTAL PIXELS	Approx. 9.84 megapixels (4206 x 2340)	
	EFFECTIVE PIXELS	Approx. 8.29 megapixels (3840 x 2160)	
MAX. MOVIE RECORDING TIME	64GB Compact Flash (CF) card; Greater capacity is possible when both slots are used; 25Mbps: 310 minutes; 35Mbps: 225 minutes; 50Mbps: 160 minutes		
LENS	Interchangeable: Choice of EF or PL mount camera bodies		
FOCUSING SYSTEM	Manual; Autofocus system not available		
MAX SHUTTER SPEED	1/2000 sec		
ISO RANGE	320 to 20000, 1-stop or 1/3-stop		
ND FILTER SETTINGS	Off, 1/4, 1/16, 1/64		
WHITE BALANCE	Auto, Manual, 2 Custom (2000K - 15,000K in 100K increments), Daylight, Tungsten		
FRAME RATE	NTSC: 59.94p, 59.94i, 29.97p, 23.98p; PAL: 50p, 50i, 25p; Film: 24p		
MINIMUM ILLUMINATION	Full AUTO mode: TBA lux; Manual mode: TBA lux		
GENLOCK TERMINAL	BNC (input only)		
HD/SD-SDI TERMINAL	BNC (output only), with embedded audio		
TIMECODE TERMINALS	BNC (input/output), Sync Out (BNC)		
VIEWFINDER	0.52-inch diagonal, color 16:9 rotatable LCD; +2.0 to -5.5 diopter eye adjustment		
LCD SCREEN (MONITOR UNIT)	4.0-inch diagonal, 1.23 megapixel color 16:9 rotatable LCD; 100% field of view; adj. brightness, contrast, color, sharpness and backlight		
MICROPHONE	None Built-in		
RECORDING MEDIA	CF Card (Type 1 Only): 2 slots (Movie files); UDMA supported; SD Card: 1 slot: Still images, Custom Picture Data*, Clip Metadata and menu settings. *Custom Picture Data and settings are not compatible with data from other Canon models		
USB TERMINAL	N/A		
VIDEO TERMINAL	Same as HD/SD-SDI Terminal		
AUDIO TERMINAL	XLR 3-pin jack (2), Switchable between MIC/LINE		
HDMI TERMINAL	Yes (Type A), output only		
AV MINI-TERMINAL/HEADPHONE TERMINAL	3.5mm stereo mini-jack		
WFT TERMINAL	For compatible Wi-Fi Accessory		
BODY DIMENSIONS (W x H x D)	Approx. 5.2 x 7.0 x 6.7 in (133 x 179 x 171 mm) (with thumb rest)	Approx. 5.2 x 7.0 x 7.0 in (133 x 179 x 177 mm) (with thumb rest)	
	Approx. 3.2 lb (1430 g)	Approx. 3.6 lb (1630 g)	

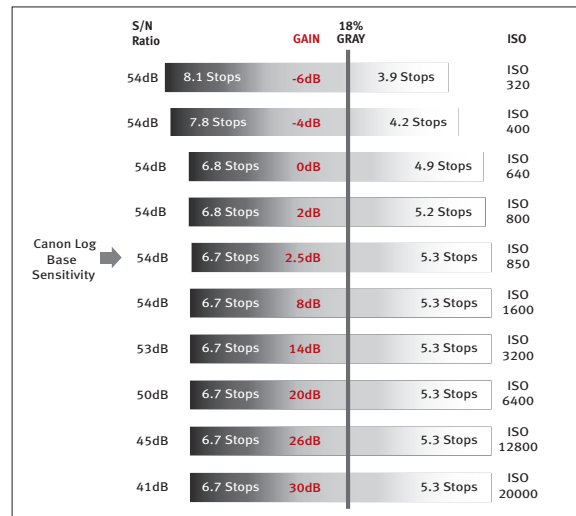
## TECHNOLOGY

### Canon Super 35mm CMOS Sensor



Modeled on the Super 35mm 3-perf motion picture film standard, Canon's CMOS sensor has an active image size of 24.6 x 13.8mm. It utilizes 3840 (H) x 2160 (V) photosites to perform the crucial optoelectronic transformation of digital imaging. Each photosite is a generous 6.4 x 6.4 micrometers in area and each has a microlens that ensures the highest efficiency in light transfer to the individual photodiode. Proprietary technologies within the photosite simultaneously lower the image sensor noise floor while enhancing the photon capacity of the photodiode – a combination that assures superb dynamic range. The image sensor utilizes an innovative readout technique that delivers full bandwidth individual RGB video components without the need for any debayering algorithms. Each of these components has a 1920 (H) x 1080 (V) sampling structure at up to 60 frames. From these original video components, a 1080-line 60i format or a 1280 (H) x 720 (V) at 60P format is selectively derived. A high-speed readout significantly reduces the subjective visibility of the vertical skewing on fast-moving horizontal subjects that is characteristic of CMOS image sensors.

## DYNAMIC RANGE CHART



ISO and Dynamic Range Specifications (Canon Log, Progressive Scan)

## OPTIONAL ACCESSORIES



### Wireless File Transmitter WFT-E6A\*

Greater mobility when you need it – that's the advantage of Canon's optional Wireless File Transmitter WFT-E6A. The EOS C300 and EOS C300 PL come preconfigured so that camera settings can be viewed and securely controlled on third-party devices with common web browsers, including computers, smartphones and tablets without the need for additional software. With the WFT-E6A module, the camera can be controlled from up to 150 feet away over an 802.11 b/g/n/a wireless network. The WFT-E6A lets you start and stop recording and also adjust focus, white balance, gain and other parameters as well as adjust the aperture of Canon EF lenses. It also gives you input marking for metadata and offers a live view of the composition. It even supports incorporating GPS information into the file metadata – useful for general cinematic applications, and essential for expedition filmmakers.

\* As of October 18, 2011, the Wireless File Transmitter WFT-E6A has not been authorized as required by the rules of the Federal Communications Commission. This device is not, and may not be offered for sale or lease, or sold or leased, until authorization is obtained.

©2011 Canon U.S.A., Inc. All rights reserved. Not responsible for typographical errors. Availability and specifications subject to change without notice. Some of the images and effects are simulated. Canon, DIGIC and EOS are registered trademarks of Canon Inc. in the United States and may also be trademarks or registered trademarks in other countries. IMAGEANYWARE is a trademark of Canon. All other products and brand names may be registered trademarks, trademarks or service marks of their respective owners in the United States and/or other countries.



For more info:  
Call 1-855-CINE-EOS (1-855-246-3367)  
pro.usa.canon.com